

KLAIPEDA CHECK-IN PROCEDURE FOR FREIGHT



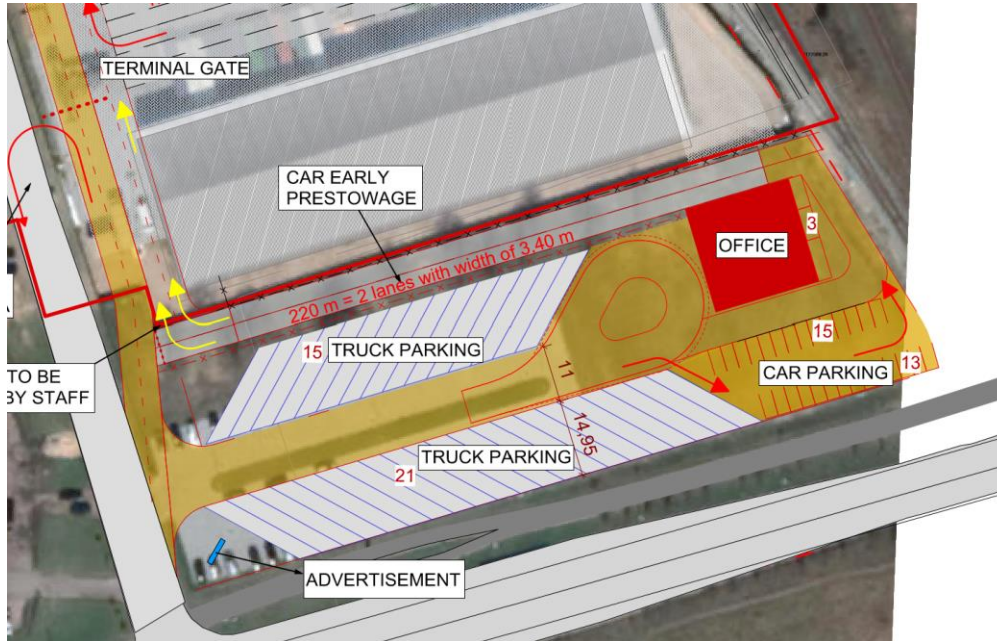
Address: Container Terminal (KKT)

Minijos St. 180, LT-93269 Klaipeda;

Departures/Arrivals of Marco Polo

Check-in starts 4 hours before scheduled departure

Accompanied Units



Check-In

Klaipeda - Trelleborg

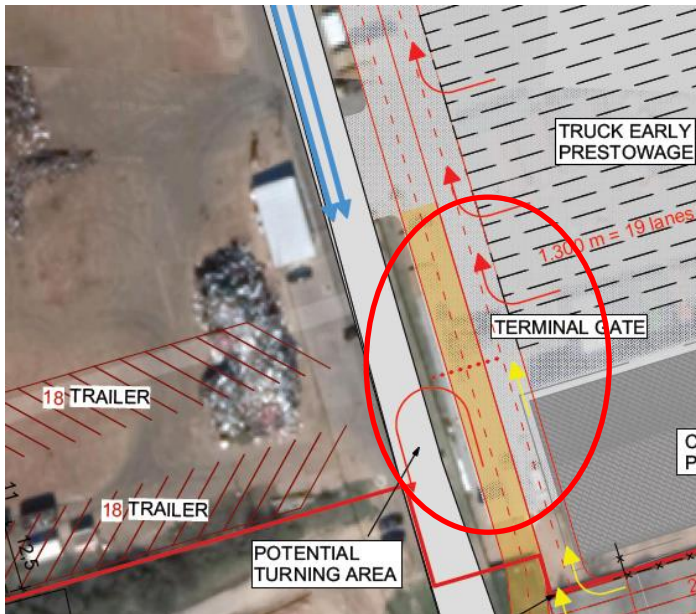
- ✓ Truck drivers park at the parking space and go to the office
- ✓ After Check-in the driver receives the boarding card and drives to the TT-Gate
- ✓ Driver gets access to the Port by scanning the boarding card at the gate, then drive to the “CAR AND TRUCK PRESTOWAGE” area at the berth following the signs with the direction at the Terminal

Klaipeda - Continent

- ✓ Transshipment bookings (via Trelleborg) have to be checked-in at the counter
- ✓ More Information about transshipments can be found [here](#).



Unaccompanied Units



Pick-Up 24/7

- ✓ Driver gets a TIN Code from TT-Line with the booking confirmation, which is combined with registration number/ILU-Code the permission to pick up the unaccompanied unit
- ✓ Driver needs to present TIN number and his full name to the gatekeeper at “harbour-gate”, who allows the entry to the Port/ISPS. Gatekeeper tells the driver where at harbour the unit is parked (area A-F).
- ✓ In case of a container unit the stevedoring lifts the container from chassis to truck

Drop 24/7

- ✓ Driver checks-in the unit in the container in the Corner of the Parking space
- ✓ Gate keeper tells him where to place the unit (area A-F)
- ✓ In case of a container unit the stevedoring lifts the container from truck to a chassis